

**Composition  
of the  
Career Staff  
Workforce  
by Race  
and Sex**

---

2000

University of California  
Office of the President  
Human Resources and Benefits

---



## This report presents

information on the composition of the career staff workforce at the University of California by race and sex. Information on career staff employees is presented

Universitywide and by personnel tier.

Some of the graphics display the career staff employee population as of April 2000, while others trace changes over time from April 1991 to 2000. The staff

workforce array reflects the University's three tiers of personnel groupings which were implemented on July 1, 1996.

The data covers career employees at the ten campuses (including medical centers), the three DOE laboratories, and the Office of the President.

Campus and Office of the President workforce representation data in the report were extracted from the Corporate

Personnel System developed by the Office of Information Resources and Communications at the Office of the President, while laboratory data was

provided by each of the laboratories.

Availability data was provided by the campuses.



This report was prepared by the Employee Relations and EEO/AA/Diversity Office. Questions should be referred to Director Mattie L. Williams at (510) 987-0865 or mattie.williams@ucop.edu.

# Table of Contents

Career Staff Workforce  
by Personnel Tier (2000)..... 1

Career Staff Workforce  
by Race/Ethnicity (2000)..... 3

Minority Representation  
of Career Staff Employees  
by Personnel Tier (2000)..... 5

Gender Representation  
of Career Staff Employees  
by Personnel Tier (2000)..... 7

Change in Minority and  
Female Representation  
of Career Staff Employees (1991-2000)..... 9

Change in Gender Representation  
of Career Staff Employees (1991-2000)..... 11

Career Staff Workforce  
Race/Sex Representation (1991-2000)..... 13

Senior Managers Race/Sex  
Representation (1991-2000)..... 15

Managers and Senior Professionals  
Race/Sex Representation (1991-2000)..... 17

Professionals and Support Staff  
Race/Sex Representation (1991-2000)..... 19

Senior Managers Minority  
and Female Availability  
and Utilization (2000)..... 21

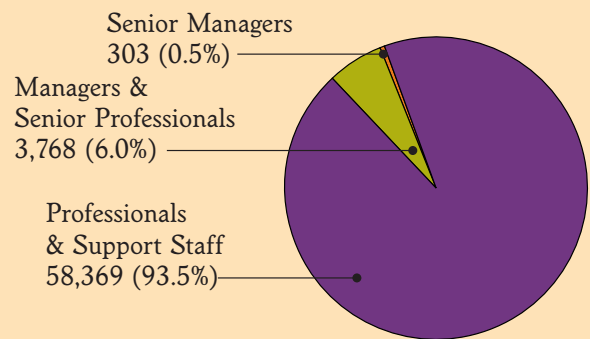
Managers and Senior Professionals  
Minority and Female Availability  
and Utilization (2000)..... 23

DOE Laboratories Career Staff  
Workforce by Race/Ethnicity (2000)..... 25

DOE Laboratories Career Staff  
Workforce Race/Ethnicity by  
Gender (2000)..... 27

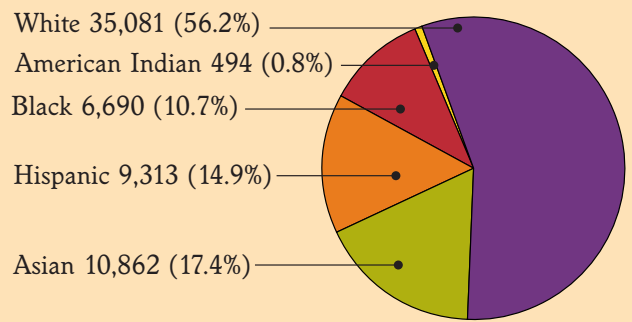
# Career Staff Workforce by Personnel Tier 2000

Total = 62,440

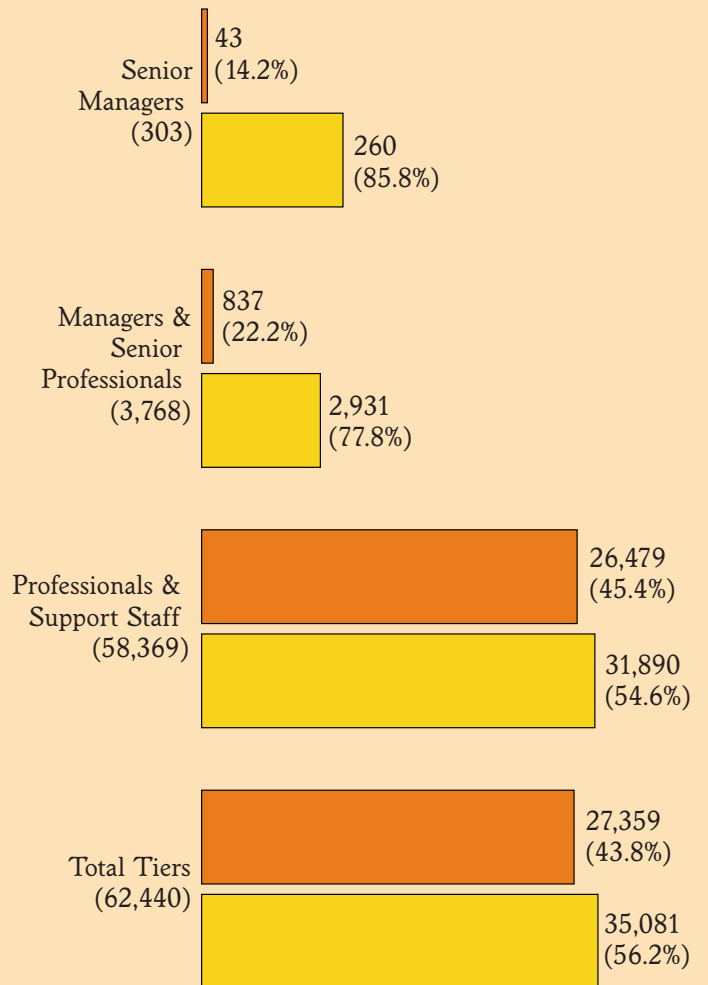
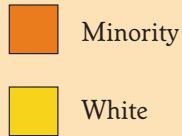


# Career Staff Workforce by Race/Ethnicity 2000

Total = 62,440



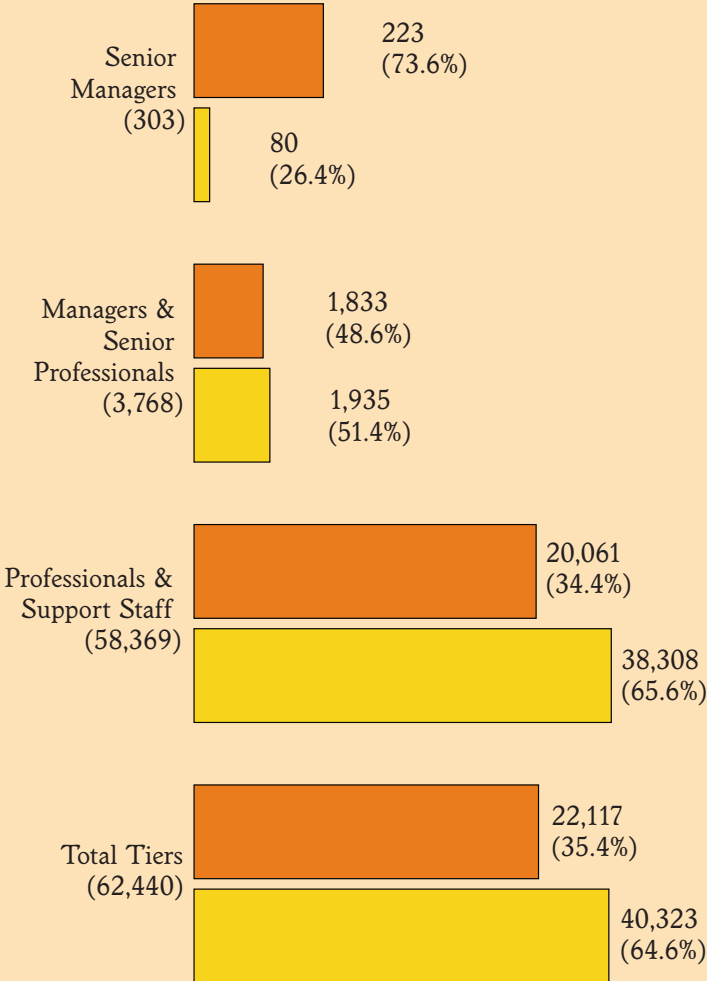
## Minority Representation of Career Staff Employees by Personnel Tier 2000



Excludes DOE laboratories

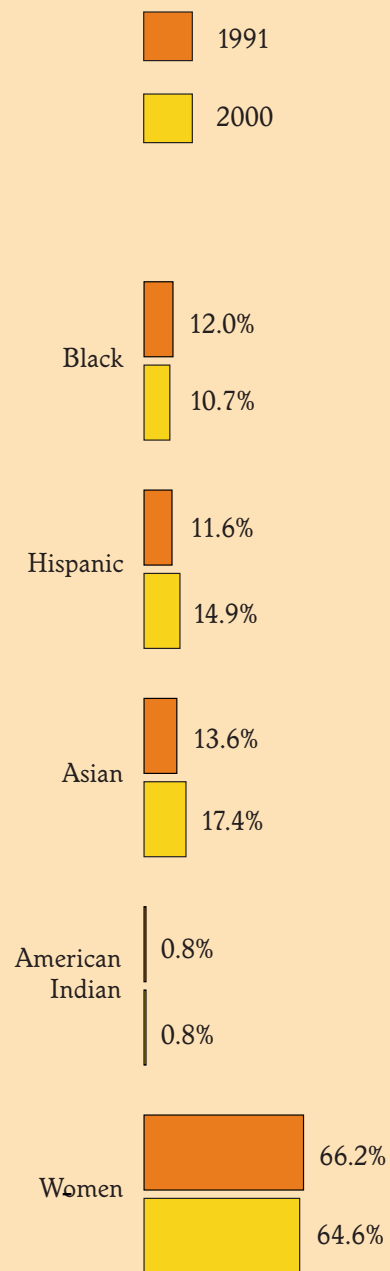
# Gender Representation of Career Staff Employees by Personnel Tier 2000

Men  
 Women



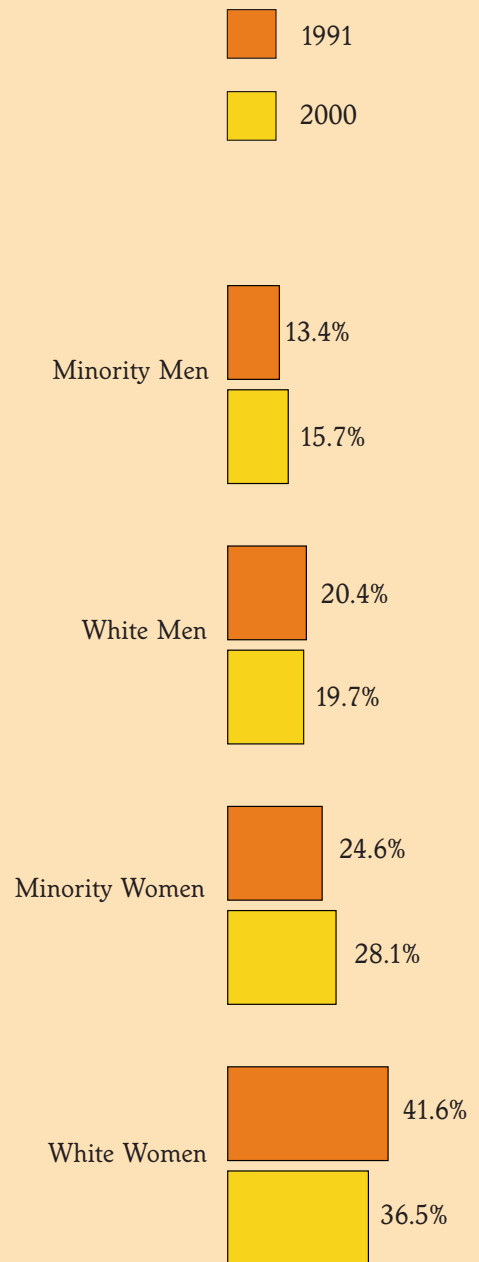
Excludes DOE laboratories

## Change in Minority and Female Representation of Career Staff Employees



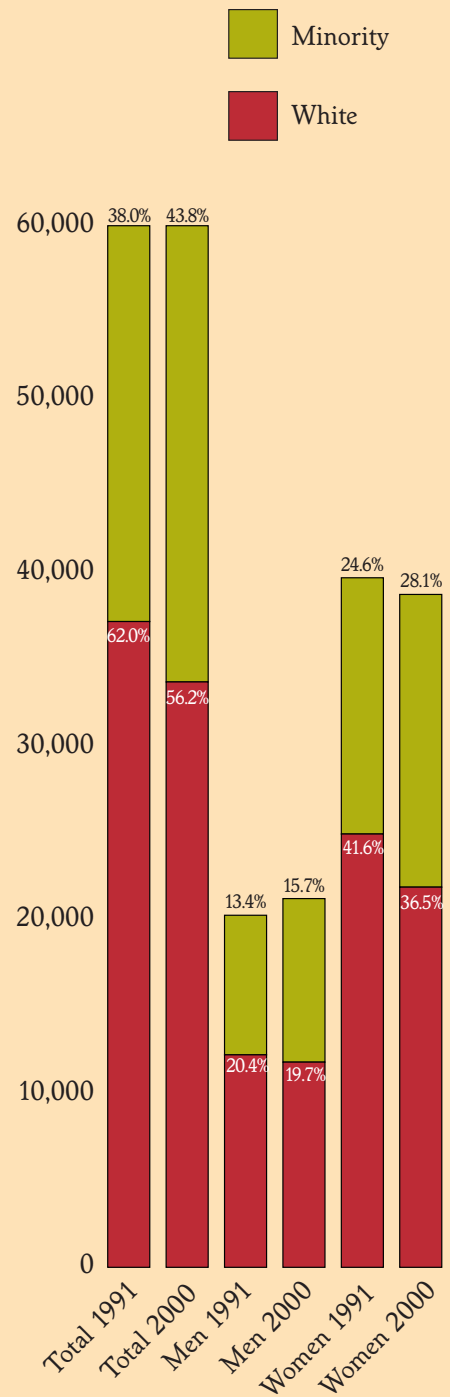
Excludes DOE laboratories

## Change in Gender Representation of Career Staff Employees



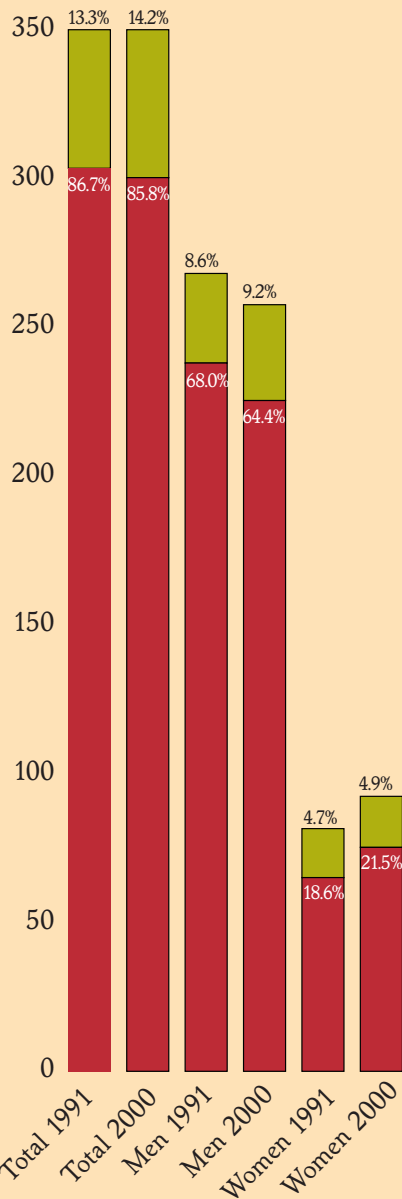
Excludes DOE laboratories

## Career Staff Workforce Race/Sex Representation



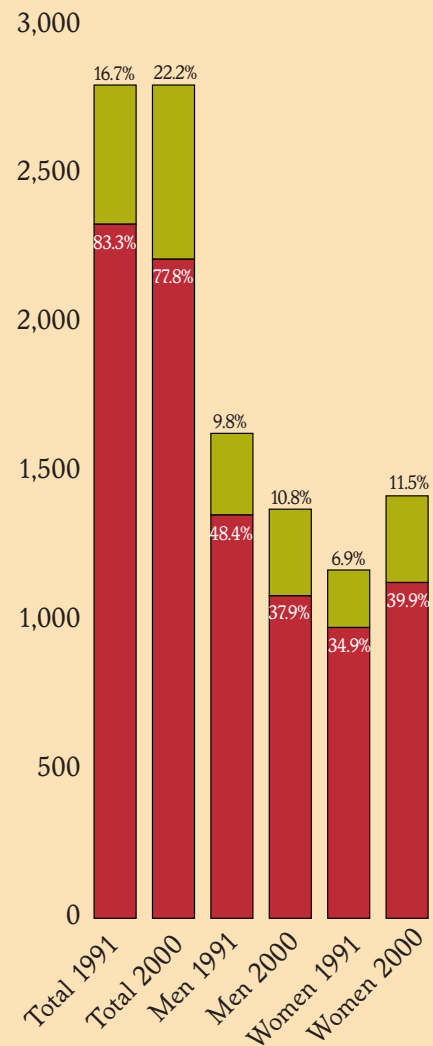
Excludes DOE laboratories

# Senior Managers Race/Sex Representation



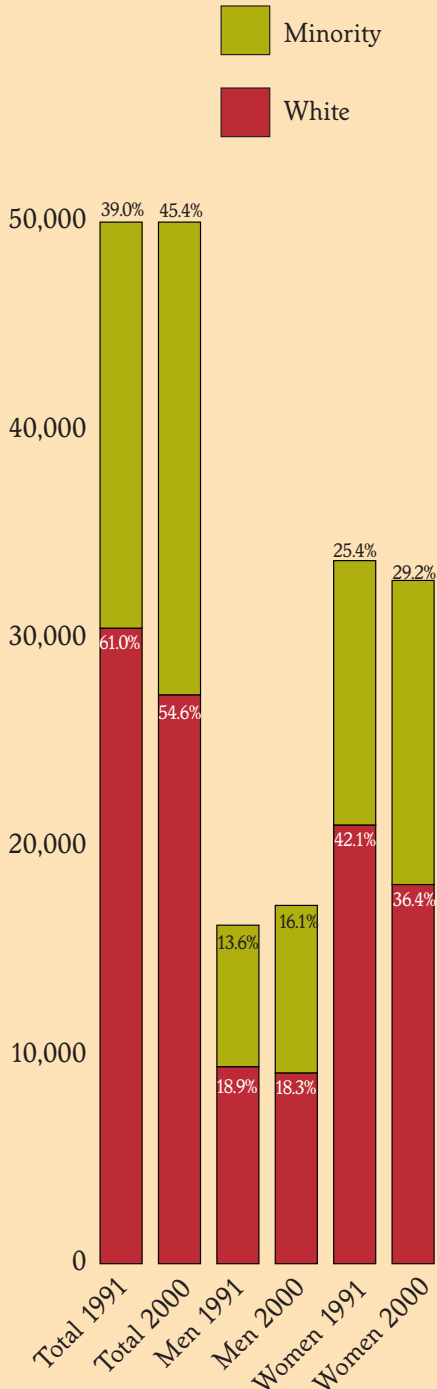
Excludes DOE laboratories

## Managers and Senior Professionals Race/Sex Representation



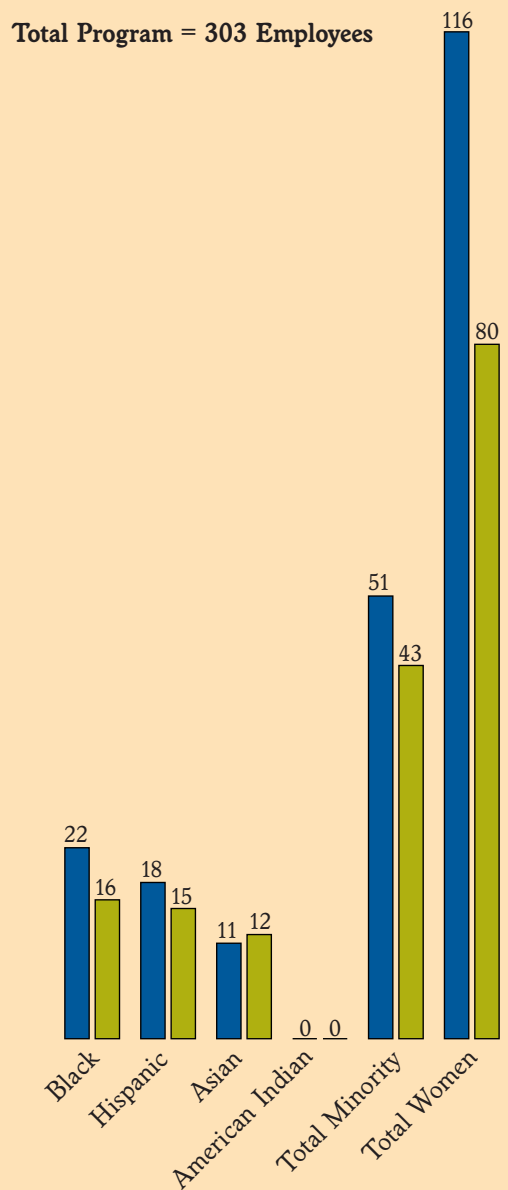
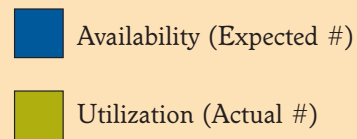
Excludes DOE laboratories

# Professionals and Support Staff Race/Sex Representation



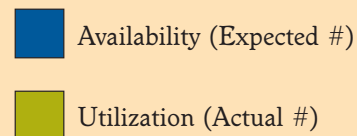
Excludes DOE laboratories

## Senior Managers Minority and Female Availability and Utilization 2000

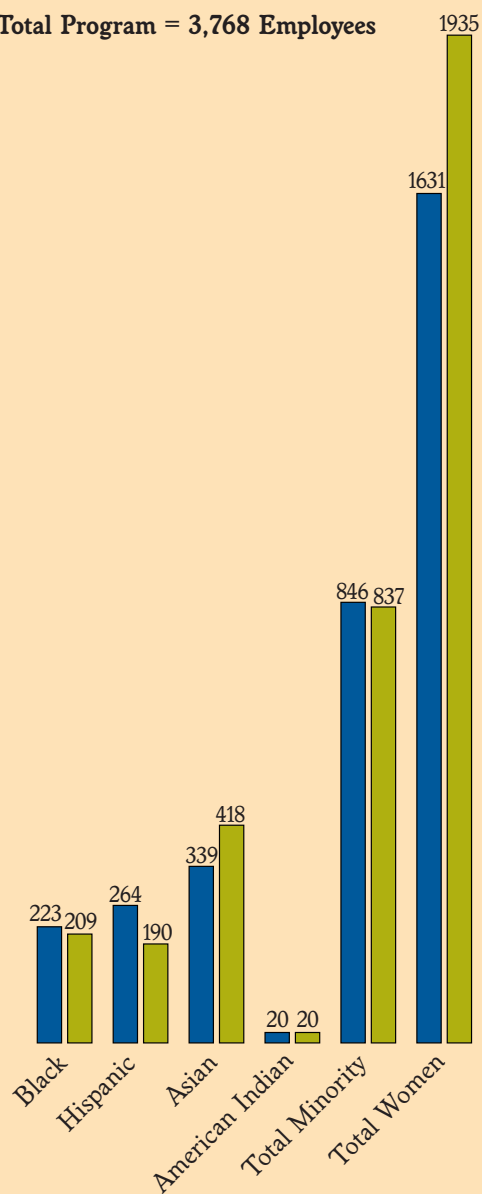


Excludes DOE laboratories

## Managers and Senior Professionals Minority and Female Availability and Utilization 2000



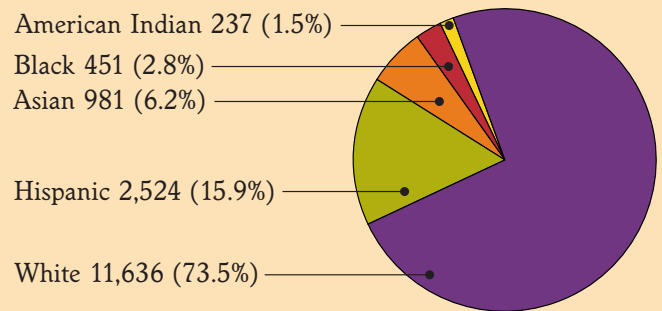
Total Program = 3,768 Employees



Excludes DOE laboratories

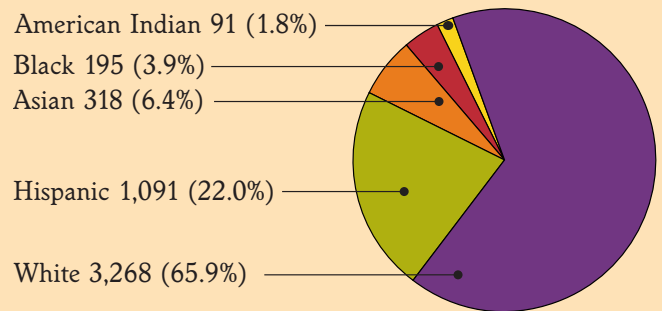
DOE Laboratories  
Career Staff Workforce  
by Race/Ethnicity  
**2000**

**Total = 15,829**

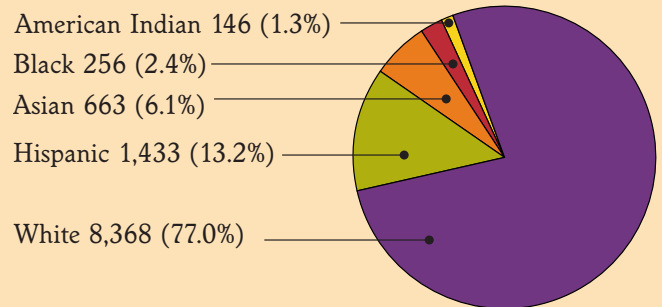


DOE Laboratories  
Career Staff Workforce  
Race/Ethnicity by Gender  
2000

Female — Total = 4,963



Male — Total = 10,866





**University of California**  
Nondiscrimination and  
Affirmative Action Policy Statement

The University of California prohibits discrimination against or harassment of any person employed by or seeking employment with the University on the basis of race, color, national origin, religion, sex, physical or mental disability, medical condition (cancer-related or genetic characteristics), ancestry, marital status, age, sexual orientation, citizenship, or status as a covered veteran (special disabled veteran, Vietnam era veteran, or any other veteran who served on active duty during a war or in a campaign or expedition for which a campaign badge has been authorized).

The University of California is an affirmative action/equal opportunity employer. The University undertakes affirmative action to assure equal employment opportunity for minorities and women, for persons with disabilities, and for special disabled veterans, Vietnam era veterans, and any other veterans who served on active duty during a war or in a campaign or expedition for which a campaign badge has been authorized.

University policy is intended to be consistent with the provisions of applicable State and Federal laws.

Inquiries regarding the University's equal employment opportunity policies may be directed to:

**Staff and Management:**

Mattie L. Williams  
Director—Employee Relations & EEO/AA/Diversity  
UC Office of the President  
(510) 987-0865  
e-mail: [Mattie.Williams@ucop.edu](mailto:Mattie.Williams@ucop.edu)

**Academic:**

Sheila O'Rourke  
Executive Director—Academic Compliance  
UC Office of the President  
(510) 987-9499  
e-mail: [Sheila.ORourke@ucop.edu](mailto:Sheila.ORourke@ucop.edu)



University of California  
Human Resources and Benefits